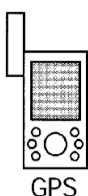


GPS Plotter

the fast and simple way to fix your
GPS position on a paper chart

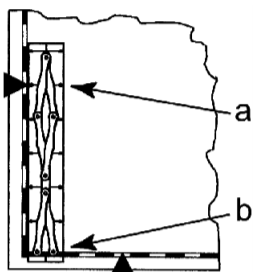
Basic Use

1. Read the latitude and longitude from your GPS.

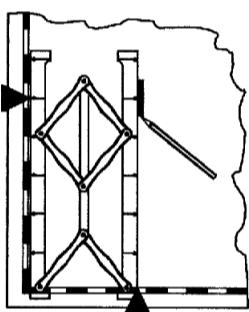


2. Identify the required latitude and longitude on the chart and position the GPS Plotter so that:

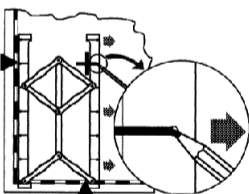
- one pair of holes (it does not matter which pair) line up with the required latitude and:
- it overhangs the longitude scale.



3. Open the GPS Plotter to the required longitude. Mark the chart with a short line. The relevant hole shows where the line is needed.

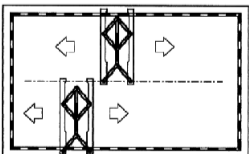


4. Holding the left hand side of the GPS Plotter firmly on the chart, place a pencil in the hole and using the pencil, move the right hand side further open. This will mark the required latitude.
FIX COMPLETED.

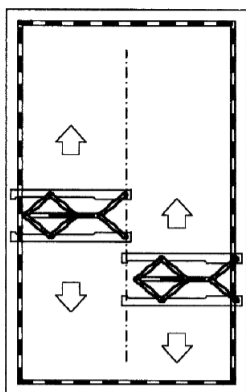


One Size covers all Charts

By using the longitude scales at both the top and bottom of the chart, the whole chart can be covered.



For charts orientated the other way around, simply re-orientate the GPS Plotter.



Measuring Latitudes and Longitudes of Waypoints

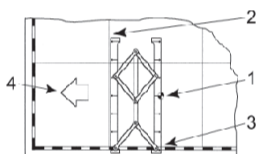
The latitude and longitude of any point or object on a chart can be easily determined using the GPS Plotter as follows:

1. Align one edge and one of the holes with the object.

2. Square up the GPS Plotter using any convenient chart grid line.

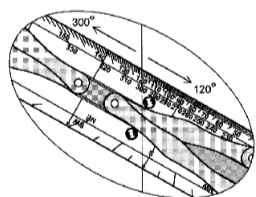
3. Read the longitude.

4. Walk the GPS Plotter to the side of the chart and read the latitude.



Using the GPS Plotter as a Parallel Rule

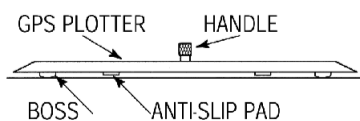
The GPS Plotter can be used for laying off bearings and headings in the same way as a traditional parallel rule. Use either a compass rose printed on the chart, or the Captain Fields pattern marked on the GPS Plotter, as illustrated below.



Non-slip Action

The GPS Plotter is fitted with anti-slip pads on its underside. Normally the pads are held clear of the chart by a series of bosses.

This allows the GPS Plotter to slide easily, as is required when marking lines of latitude (see above - "Basic Use"). Pressing down on the handle engages the pads and ensures a non-slip action when "walking" the Plotter across the chart. Press for grip - release for slip.



#130



7 2 1 0 0 2 0 0 1 8 4 9

PRODUCT MADE IN UNITED KINGDOM
PACKAGING MADE IN CHINA

Weems & Plath®

Annapolis, MD U.S.A.

410 263-6700

www.weems-plath.com